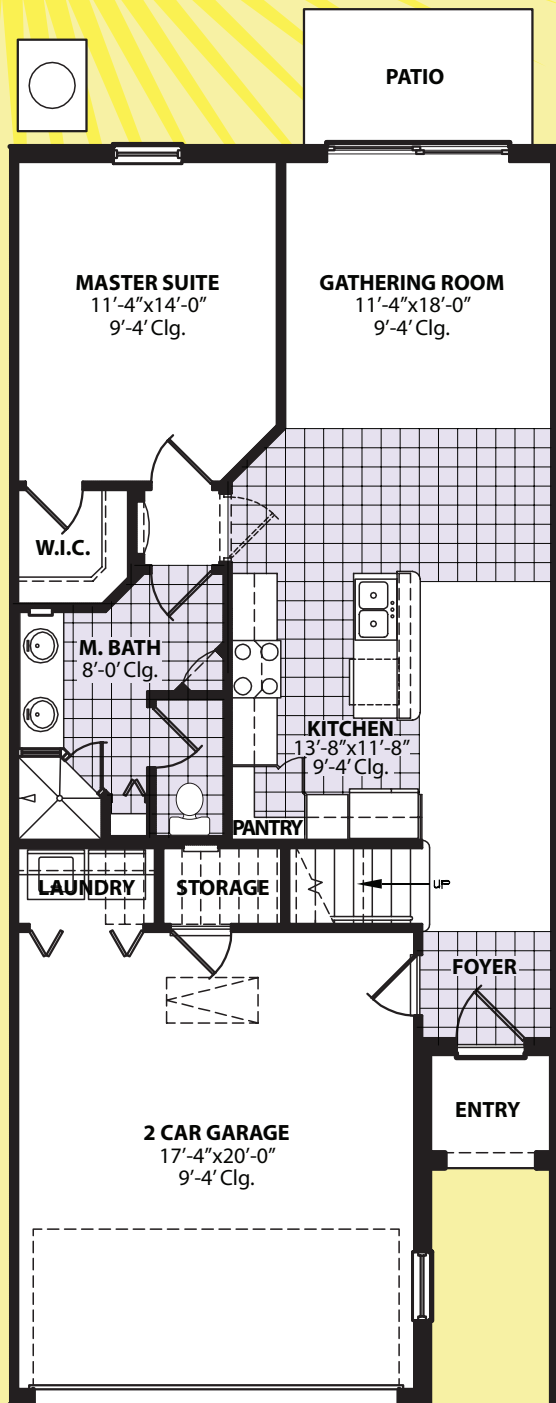


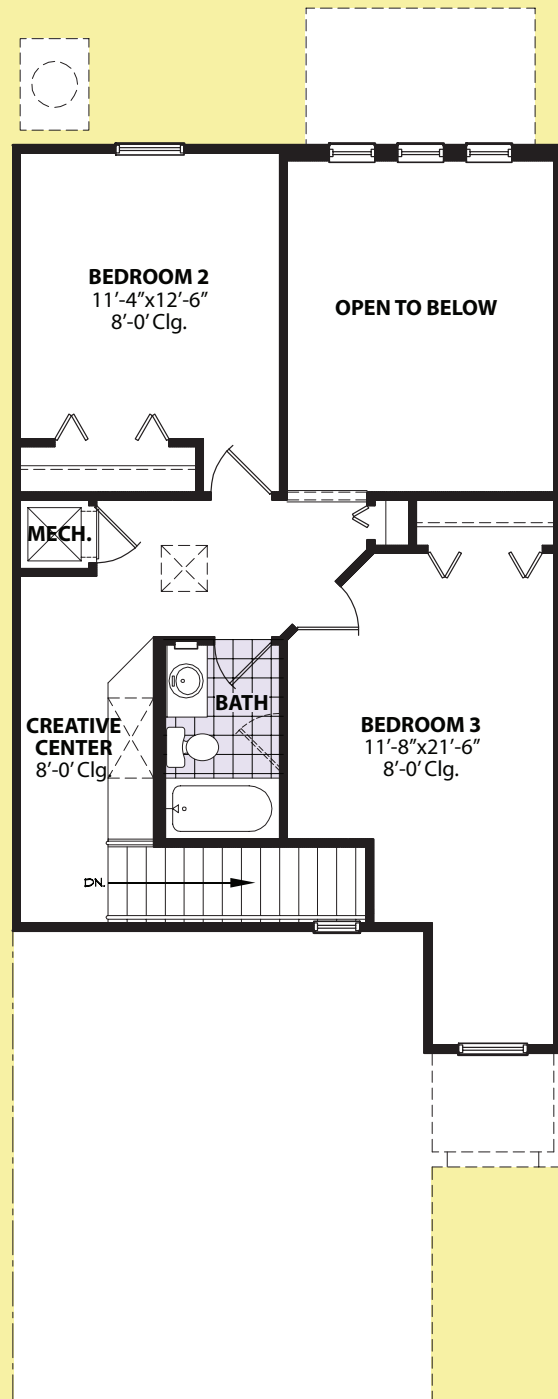
Dronero



LIVING 1ST. FLOOR	835 SQ. FT.
LIVING 2ND. FLOOR	623 SQ. FT.
TOTAL LIVING	1458 SQ. FT.
ENTRY	28 SQ. FT.
GARAGE	399 SQ. FT.
MECHANICAL	10 SQ. FT.
TOTAL UNDER ROOF	1895 SQ. FT.



First Floor



Second Floor

Better Built Homes continually strives toward design improvements. Therefore, room dimensions and ceiling heights, total square footage, although believed to be accurate, specifications and other items, are subject to field variations and changes, without notice or obligation. Oral representation cannot be relied upon. Monthly payments, taxes, HOA are also subject to changes without notice. All artwork and images are only the artist's conception. All furnishings and accessory's are not included in sales price. See sales consultant for more details. CBC057384